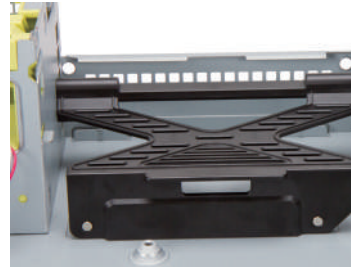
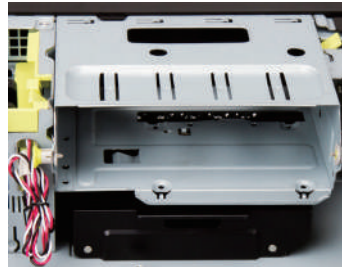
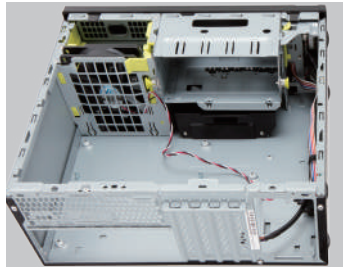
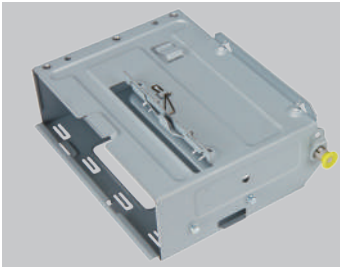
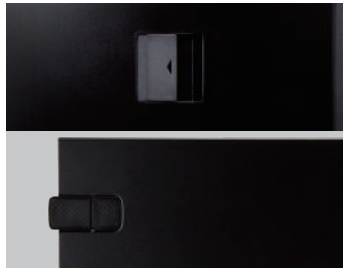


CE SERIES mATX CHASSIS

11.9L SMALL FORM FACTOR



Features

New Slim Chassis

Innovative thermal design without ventilation holes on the top, bottom or side panels. Placement in both Vertical or Horizontal stance.

Superior Thermal Solution

Vacuum effect with a built-in 90mm front fan for quick heat dissipation.

Highly Expandable

Equipped with two USB 2.0 and two USB 3.0 ports (or four USB 2.0) for multiple USB device connections.

Easy Installation

Tool-free design for ODD, HDD, fan bracket and PCI slots.

Quick Release Side Cover

One touch release for fast system assembly or maintenance.

CE SERIES

mATX CHASSIS

11.9L SMALL FORM FACTOR



CE685 ■

* Available in Selected Regions Only



CE052 ■



CE073 ■

* Available in Selected Regions Only

Specifications

Case Size	S.F.F Slim Chassis
External Drive Bays	5.25" x 1, 3.5" x 1 (Up to 92mm) *CE723: N/A (Optional 3.5"/2.5" x 1 Converted from 5.25" to 3.5"/2.5" HDD Bracket)
Internal Drive Bays	3.5" x 1, 2.5" x 1
Front Ports	USB 3.0 x 2 & USB 2.0 x 2 or USB 2.0 x 4, HD Audio
Dimensions (HxWxD) w/o Front Panel	334 x 96 x 370mm (11.9L) 13.1" x 3.8" x 14.6"
MB Form Factor	Micro-ATX, Mini-ITX
I/O Expansion Slots	Low Profile Slot x 4
Power Supply	Standard TFX 12V
Thermal Solution	90mm Front Fan x 1
Safety	Meets RoHS, CE and FCC Class B Requirements
Security	Padlock Loop / Kensington Slot
Optional	• 5.25" to 3.5"/2.5" HDD Bracket • Removable Air Filter • Type-C • Chassis Intrusion Switch • Tool-Free Side Cover • Key Lock Side Panel

* The actual product is subject to change without prior notice. In Win Development Inc. reserves the right to make final modifications.